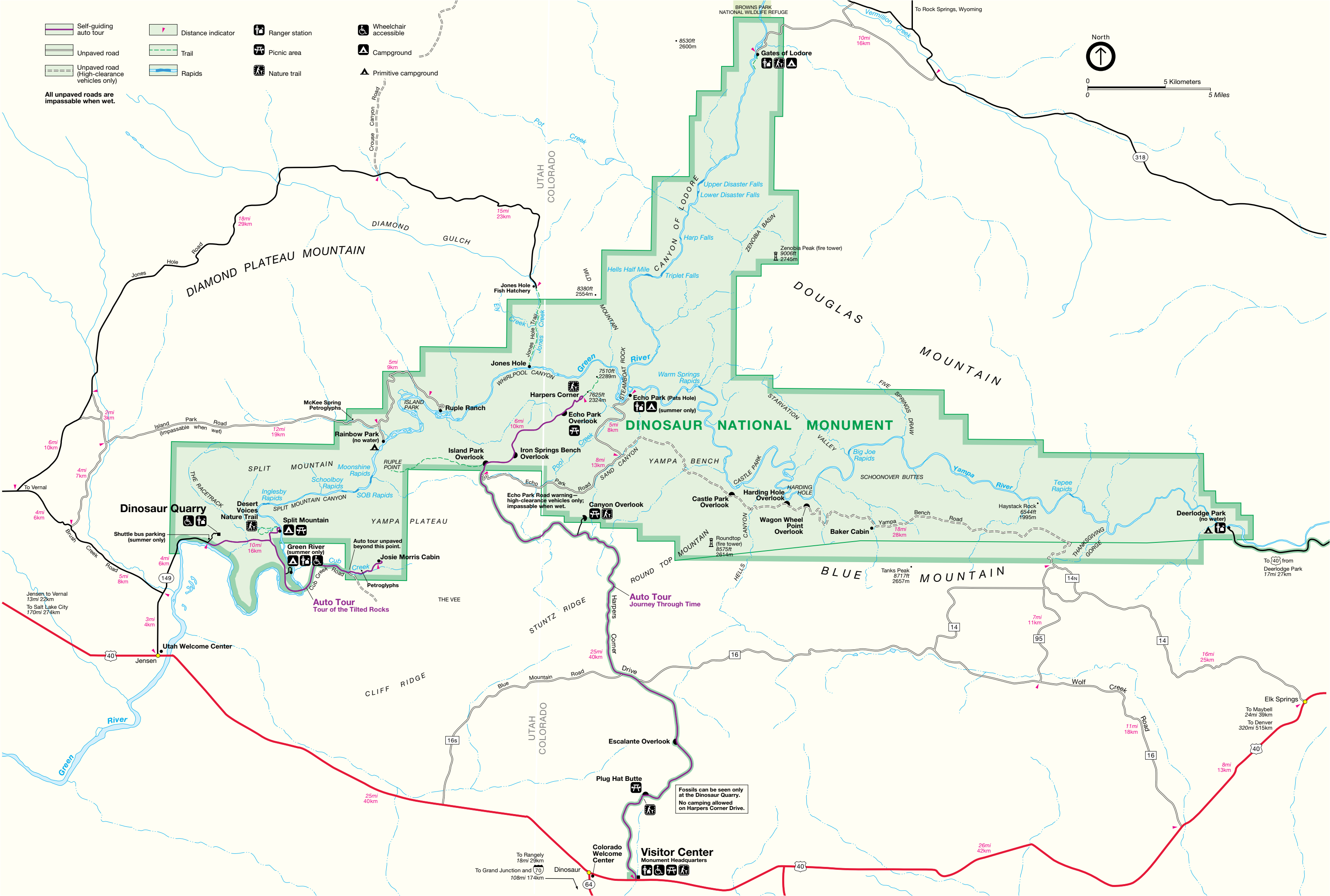


- Self-guiding auto tour
- Unpaved road
- Unpaved road (High-clearance vehicles only)
- Distance indicator
- Trail
- Rapids
- Ranger station
- Picnic area
- Nature trail
- Wheelchair accessible
- Campground
- Primitive campground

All unpaved roads are impassable when wet.

North

0 5 Kilometers  
0 5 Miles



Fossils can be seen only at the Dinosaur Quarry. No camping allowed on Harpers Corner Drive.

Visitor Center  
Monument Headquarters

Jensen to Vernal  
13mi 22km  
To Salt Lake City  
170mi 274km

Elk Springs  
To Maybell  
24mi 39km  
To Denver  
320mi 515km

To Rangely  
18mi 29km  
To Grand Junction and  
108mi 174km

To 40 from  
Deerlodge Park  
17mi 27km